



Roadbuilding

Mobile Products



Cedarapids

- Reclaimer/Stabilizers
- ROTO-MILL
Profilers
- Trimmer/Reclaimers
- Slipform Pavers





ROTO-MILL Pavement Profilers

Pavement profilers on tracks or tires with cutting depths from 1 to 18 in.

- PR-600
- PR-800-7
- PR-860
- PR-1050B





PR-600 ROTO-MILL



- 14 in. Plunge Cut Capability
- Bolt-On, Quick-Mount Cutter
- Four-Track Power





Makes Deep Plunge Cuts...

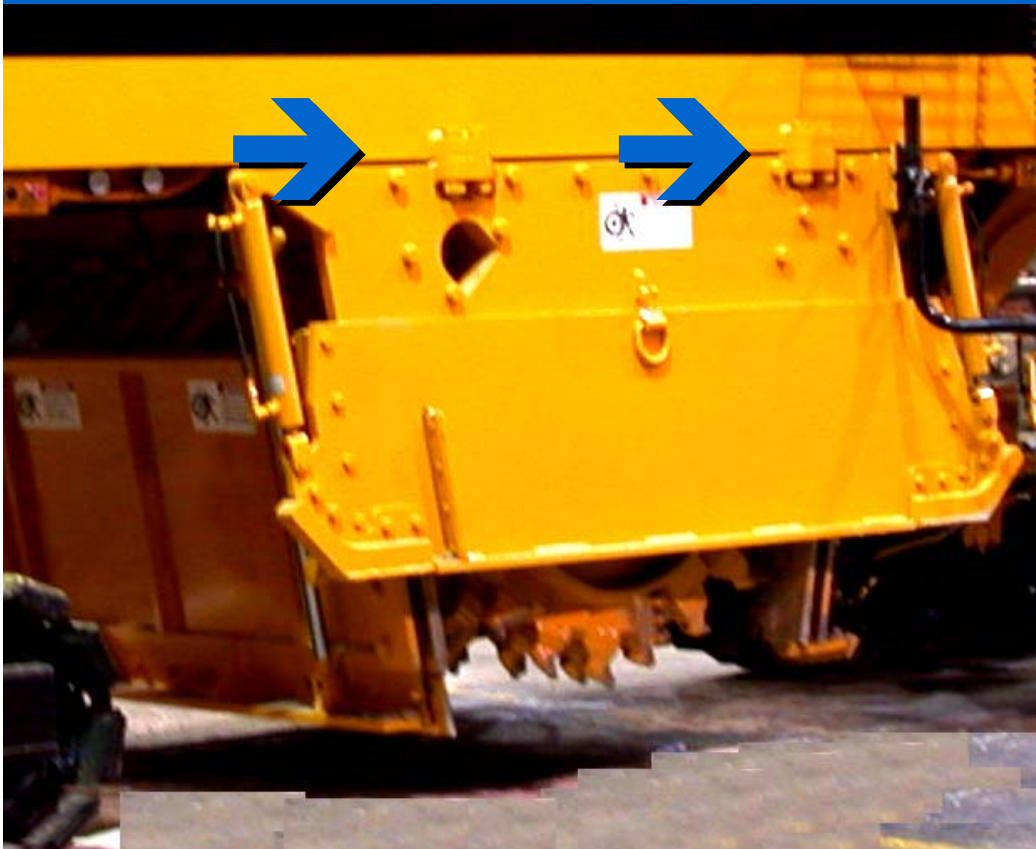


The PR-600 packs the power to make 14 in. deep plunge cuts seem like they are just all in a day's work. An operator's station ahead of cutter offers excellent visibility of the cut in urban areas and when negotiating job site obstacles .





Bolt-On, Quick-Mount Cutter ...



Designed for high-production and minimal downtime, all PR-600 components are modular for fast removal and maintenance. The cutter assembly bolts in place for quick changes.





Four-Track Agility...



The PR-600's Four-track stance gives it an 8 ft. turning radius without sacrificing any of the traction needed to pull through deep, wide cuts on challenging terrain.





PR-800-7 ROTO-MILL



- Three-Track Agility
- Powerful Engine
- New Low-Maintenance Legs





Three-Track Suspension...



A three-track stance gives the **PR-800-7** all the maneuverability and traction needed for big jobs. It also cuts the mill's turning radius and helps the operator steer around obstacles more easily.





Powerful 860 h.p. Engine ...



The **PR-800-7** has a rugged 860 h.p. CAT diesel for high production and optimum power in tough cuts.





Low-Maintenance Legs ...



The PR-800-7 uses an improved hydraulic leg tower that lasts longer with less maintenance than earlier designs.





PR-860 ROTO-MILL



- Full- or Half-Lane Milling
- Three-Track Agility
- Low-Profile Design





Do Full- or Half-Lane Work ...



The **PR-860** has the power, versatility and maneuverability to take on full- or half-lane work milling to a depth of 12 inches at a maximum width of 84 3/4 inches.





Three-Track Stance ...



The **PR-860** has a three-track design that gives it great maneuverability and a smaller turning radius than a similar-size four-track machine. This mill is agile moving into or away from a curb line or slipping by obstacles.





Low-Profile Design



The low-rise **PR-860** slips under structures and trees on tight city jobs to let crews work efficiently. Track drive helps an operator steer around ground-level obstacles that could slow the progress of other large profilers.





PR-1050B ROTO-MILL

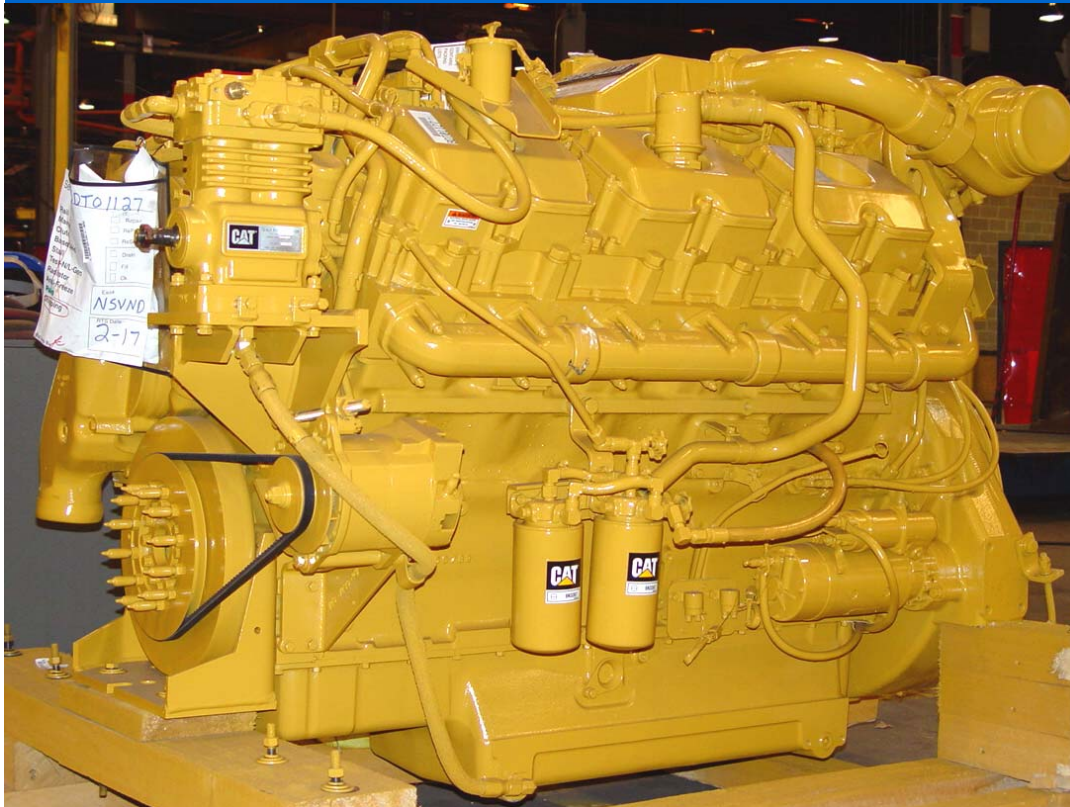


- Dual Diesel Engines
- 12.5 ft. or Wider Cutting
- Bi-Directional Capability





Dual Diesel Engines ...



An 860 h.p. CAT diesel powers the PR-1050B's massive rotary cutter assembly. A smaller 220 h.p. CAT powers the ground drive and auxiliary systems.





Cuts to 12.5 ft., or More ...



The **PR-1050B** comes equipped to make to 12.5 ft. wide cuts. Customers can choose bolt-on end sections to extend the cutter's capabilities even further for extra wide or heavy work on asphalt or concrete.





Bi-Directional Capability ...



Optional bi-directional operation kit makes the **PR-1050B** even more productive by giving it the ability to do in-place recycling work.

